

Assignment 1: Computer Applications in CEE

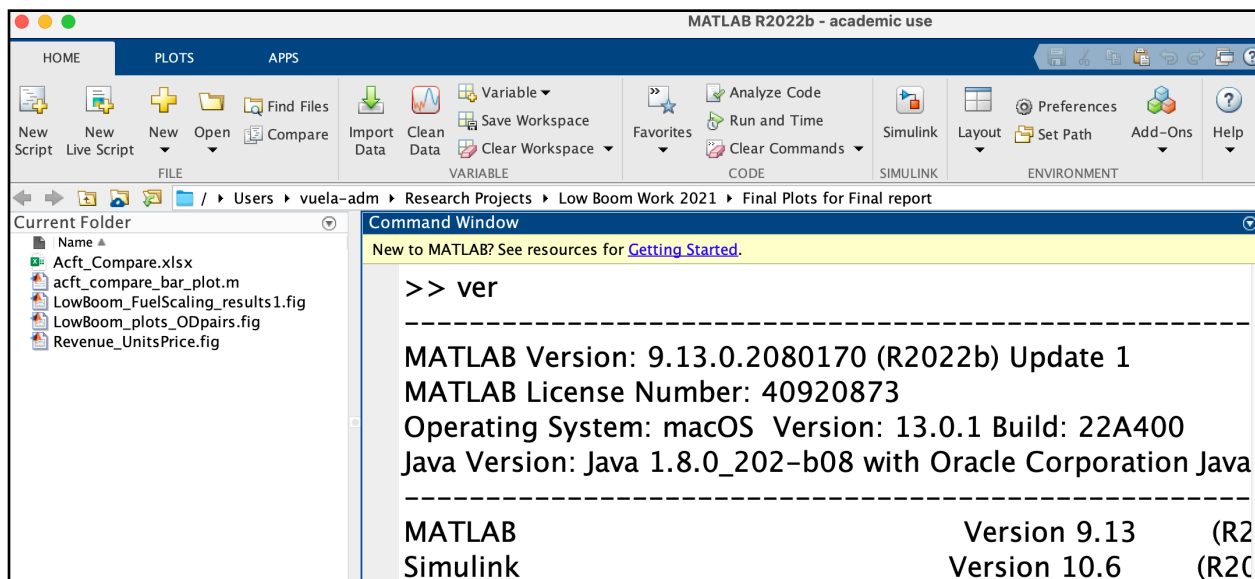
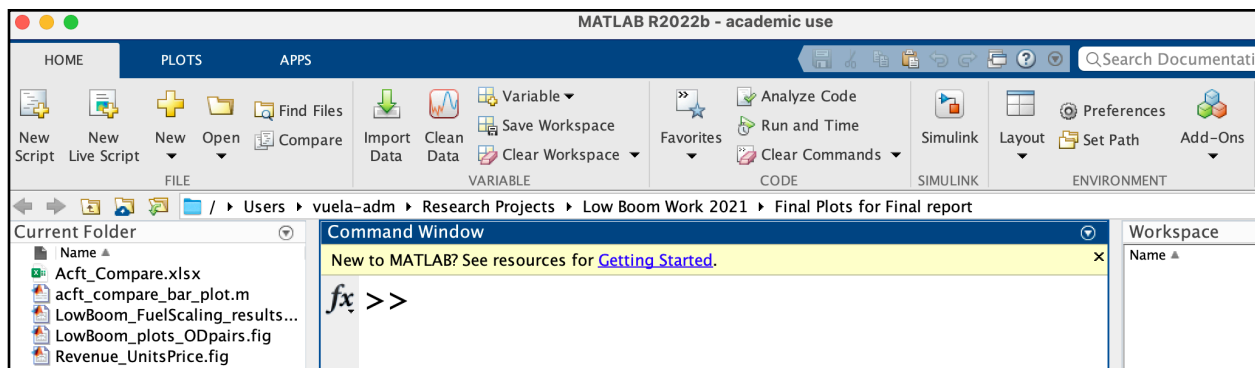
Date Due: January 23, 2023

Instructor: Trani

Problem 1

Install Matlab in your computer and provide a screen capture of the version installed. Matlab can be obtained at: <https://itpals.vt.edu/softwarelicensingcenter/studentsoftware/studentsoftwareproductlist.html>. If you have Matlab installed, show me the screen captures of the items below.

- a) Provide a screen capture of the version installed. Use the Command “ver” in the Command Window to show the version of Matlab installed.



- b) Detect the computer system architecture used in your computer in Matlab. Show me a screen capture the computer architecture. Use the following command at the Command Window.

```
archstr = computer('arch')
```

c) Detect the number of logical cores in your computer using Matlab. **Show me a screen capture** of the number of cores detected. The following command can be issued at the Command Window to detect the number of cores in your computer.

```
numcores = feature('numcores')
```

Problem 2

Install Microsoft Excel in your computer (if not readily available) and show me (via a screen capture) the version of Excel in your system.

